

PERFORMANCE

Display Size
23.8"

View Area
527.0x296.5 mm

Panel
In-Plane Switching

Backlight
WLED

Aspect Ratio
16:9

Resolution
1920x1080

Pixel Pitch
0.2745x0.2745 mm

Dot / Pixel Per Inch
93 dpi

View Angle (H / V)
178° / 178°

Response Time
4 ms (Extreme mode) / 6 ms (Typical mode)

Color Support
16.7 Million

Refresh Rate
60Hz

Brightness
250 nits

Contrast Ratio
1000:1

Color Gamut
72% NTSC

Anti-glare
Yes

Curvature
None

Camera
None

Microphone
None

Speakers
None

Power Consumption (Typical / Maximum)
22W / 140W

Power Adapter
Integrated

Touchscreen

None

Smart System

None

DESIGN

Stand

Tilt, Swivel, Pivot, Height Adjust Stand

Case Color

Raven Black

Side Bezel Width

2 mm

Dimensions with Stand (HxWxD)

567.1x539.8x204.9 mm / 22.33x21.25x8.07 inches

Weight (Including Stand)

6.1 kg / 13.5 lbs.

Mounting

Supports VESA mount 100mm

ThinkCentre® M Series Support

Tiny, Nano Support

CONNECTIVITY

USB Port

4x USB 3.2 Gen 1 (1x BC 1.2), 1x USB-C® 3.2 Gen 1

Video Connector

1x HDMI® 1.4, 1x DP 1.2, 1x DP Out, 1x USB-C 3.2 Gen 1

Network Connectivity

1x RJ45, Ethernet (10M/100M/1000M)

SERVICE

Base Warranty

3-year

CERTIFICATIONS

Environmental Certification

ENERGY STAR® Certified, TCO 9.0, EPEAT™ Gold, RoHS

Ergonomic Certification

Eyesafe® Display, TÜV Low Blue Light (Hardware solution), TÜV Rheinland® Flicker Free, TÜV Rheinland Eye Comfort

Sync Technology

None

SOFTWARE

Operating System

Support Windows® 7, Windows 10

ACCESSORIES

Video Cables

DP cable (US, Canada only), USB Type-C® to Type-A cable (US, Canada only), USB Type-C to Type-C cable

MODEL

Announce Date : 2021-07-06
EAN / UPC / JAN : 0195713896726 / 195713896726 / None



Premium Care - Advanced Support from Real People. Real Fast.



REAL PERSON

Choose how you want to reach us - through the phone, chat or email - our expert technicians will take care of you.



REAL FAST

Highly trained technicians will provide you real-time solutions, whatever the issue, on your first contact. If needed, our team will schedule an onsite visit for the next business day.



HASSLE FREE

'Getting started' and 'how-to' assistance for hardware and software. Easy solutions that are simple to reach - that's how Premium Care delivers you the ideal support experience.



PC HEALTH CHECK

Free annual PC Health Check that allows our experts to spot issues before you do so they can resolve them quickly and help you avoid PC problems.

Accidental Damage Protection - Protection of your PC from the unexpected.

Experience shows that a significant portion of devices may be damaged (and not covered under warranty) in the first three years. Lenovo's Accidental Damage Protection service covers accidents beyond the system warranty such as drops, spills, bumps and even electrical surges. Make sure your new device has maximum protection, avoid unplanned costs and get peace of mind.

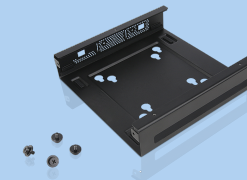
Base Warranty – Included with the systems you purchase, default 1- or 3-year coverage window.

Warranty Extensions & Upgrades – Service and protection that's right for your circumstances.

- Pick Up & Return Courier
- Onsite Support
- Technician Installed Customer
- Replaceable Unit Service
- International Warranty Upgrade

Lenovo may not offer the products, services or features discussed in this document in all regions. Lenovo may withdraw an offering at any time. Consult your local representative for information on offerings available in your area. Lenovo reserves the right to change specifications or other product information without notice. Lenovo is not responsible for photographic or typographical errors. Lenovo provides this publication "as is" without warranty of any kind, either express or implied, including the implied warranties of merchantability or fitness for a particular purpose.

Recommended Accessories



ThinkCentre Tiny VESA Mount II

4XF0N03161

The ThinkCentre Tiny VESA Mount II is a unique design specific to house the Tiny PC while featuring the universal VESA mount configuration. The VESA standard enables this mount to attach to anything that is VESA comp...



ThinkCentre Tiny Sandwich Kit II

4XH0N04098

The ThinkCentre Tiny Sandwich Kit II is a mechanical bracket which can mount your ThinkCentre Tiny PC between monitor and ThinkCentre Extend Arm. The Tiny Sandwich kit enables more desktop and floor space while provid...

For a full list of accessories and services, please visit:
<https://smartfind.Lenovo.com>

Lenovo

PSREF
Product Specifications
Reference